

## Heavy Industry Purpose Pressure Transducer



### Performance

Pressure range(FS) .....	3.5~2000 bar
Accuracy(BFSL) .....	±0.5%
Error .....	±1.5% FS TEB
Zero offset .....	±1.0% FS
Stability(typical) .....	±0.25% FS/year
Load resistance .....	>10Kohm

### Environmental

Compensated temperature .....	-25 to 85°C
Operate temperature .....	-40 to 125°C
Storage temperature .....	-40 to 125°C
Burst pressure .....	5 * FS
Proof pressure .....	2 * FS
Wetted parts .....	17-4PH SS
Output .....	Connector pins
Vibration limit .....	20 g@10~2000Hz
Shock limit .....	IEC 60068-2-27, 50 g, 11 ms pulse
Pressure cycles .....	100 million FS cycles
Sealing .....	IP66 (IEC60529)

### EMC Compliance:

EN 50081-2  
 EN 50082-2(10V/M, 26~1000MHz)  
 EN 61326

### Electrical

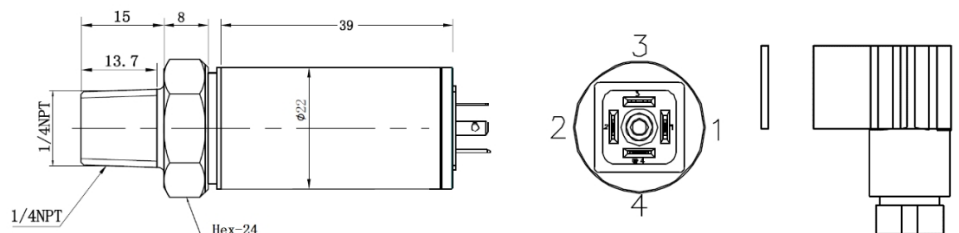
Output type	B (Ratiometric)	C (4~20mA)	D (1.0~5.0VDC)	E (0.5~4.5VDC)	F (0~10VDC)	G (0~5VDC)
Supply Voltage	4.75 ~ 5.25 VDC	9 ~ 32 VDC	8 ~ 32 VDC	8 ~ 32 VDC	12 ~ 32 VDC	8 ~ 32 VDC
Output	0.5 ~ 4.5 VDC	4 ~ 20 mA	1.0 ~ 5.0 VDC	0.5 ~ 4.5 VDC	0 ~ 10 VDC	0 ~ 5 VDC
Supply Current	< 3 mA	< 30 mA	< 3 mA	< 3 mA	< 12 mA	< 3 mA
Zero Output	0.5 VDC	4 mA	1.0 VDC	0.5 VDC	0 VDC	0 VDC
Full Scale Output	4.5 VDC	20 mA	5.0 VDC	4.5 VDC	10 VDC	5 VDC

### Features

- Gauge Pressures
- Stand high vibration
- 1.5 % Total Error Band
- Connector pins
- ASIC Temperature Compensated

### Application

- Process Automation & Control
- Test and Measurement
- Energy Management
- Heavy industry
- Plastic and Alloy injection machines



Type	B	C	D	E	F	G
Pin 1	Supply+	Supply+	Supply+	Supply+	Supply+	Supply+
Pin 2	Supply-	Output	Supply-	Supply-	Supply-	Supply-
Pin 3	Output	NC	Output	Output	Output	Output
Pin 4	NC	NC	NC	NC	NC	NC

### Ordering Information

P1502C-10-B

Range(3.5/10/100/2000 in bar)

Output type:  
 C=4~20mA  
 D=1.0~5.0V  
 E=0.5~4.5V  
 G=0~5V  
 X=Special

Port type:  
 B=1/4-18 NPT  
 C=DIN3852-A-G1/4  
 H=M20\*1.5  
 I=R1/4 Male  
 X=Special