

## DC voltage output LVDT transducer



Sensitivity, ±10%, 24°C.....	0.394V/mm
Measuring range(mm) .....	0~25.4
Nonlinearity(@50% Stroke).....	<0.15% Max.
Nonlinearity(@100% Stroke).....	<0.25% Max.
Resolution(typical).....	2mV
Repeatability.....	<0.15%

### Electrical

Power voltage.....	12~24 Vdc
Input current.....	10mA Max.
Output voltage.....	0~10V
Output current.....	5mA Max.
Frequency range(-3dB Max.).....	200Hz
Insulation resistance(@500Vdc).....	>10 MΩ

### Environmental

Temperature range.....	-25 to 85°C
Temp. coefficient of sensitivity.....	0.05%/°C Max.
Operation humidity.....	<85% R.H
Shock limit.....	250 g peak
IEC 60529 rating.....	IP65

### Physical

Sensing element.....	LVDT contactless
Output cable(28# AWG).....	PFA Insulation
Case material.....	Stainless steel

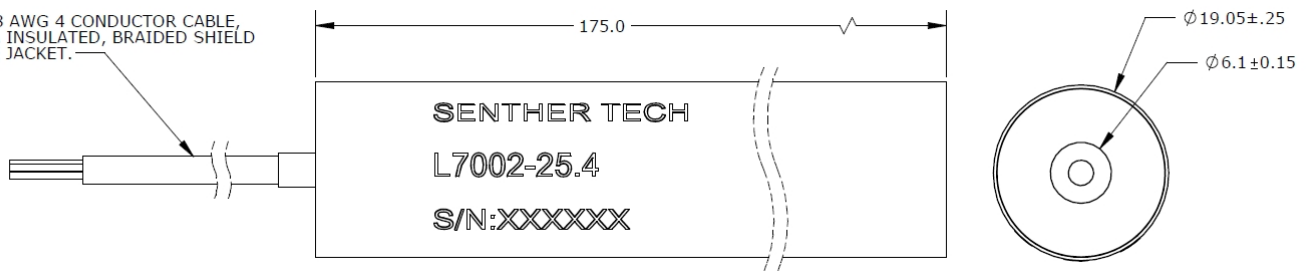
### Accessories

- Calibration certificate
- Core: mounting hole is M3 thread both sides

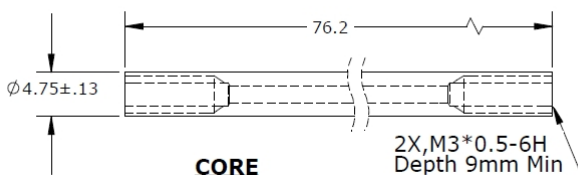
### Features

- High Resolution
- DC voltage output signal
- Shock resistant
- Compact size
- Light weight
- Reliability package

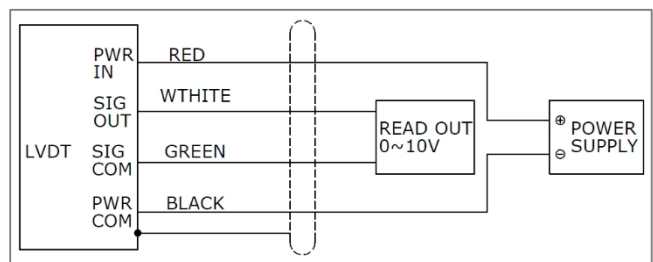
#28 AWG 4 CONDUCTOR CABLE,  
PFA INSULATED, BRAIDED SHIELD  
TPE JACKET.



**LVDT**



**CORE**



**Schematic**

### Ordering Information

